

CIC BIM Competition 2022 – Submission Poster Template

Location Plan 1:2000 ←

Note:

1. Please put in with 1:2000 Scale Location Plan with simple shadow study analysis.
2. Title Font size at 18, Calibri.
3. Description Font size at 14, min. 12, Calibri.

Note:

1. Please put in with textual description with actual project information and delete this Note.
2. Title Font size at 18, Calibri.
3. Replace the 'Sample Text' with your own descriptions.
4. Description Font size max. 14, min. 12, Calibri.

About the New Development of the Student Hostel

Design Concept: What is the design rational for the Building Design?

Aims to provide a green environment and give excellent quality of living, there are open and recreational spaces for the community.

Building Form: How does the building form relates to the surrounding site context?

The site is a trapezoid which is difficult to local normal traditional housing as that is a rectangle. For this reason, it needs to design a suitable model shape for the topography.

Spatial Arrangement: How is the Dormitory Areas, Common Areas and Sports Facility being arranged?

Connectivity: What is the vehicular and pedestrian connectivity, accessibility and evacuation considerations?

BIM Uses in Design, Collaboration, Engineering, Analysis and Optimisation: What is the defined BIM uses in carrying out design, collaboration, engineering, analysis and optimisation?

BIM Collaboration approach: What is the approach and BIM tools for design collaboration?

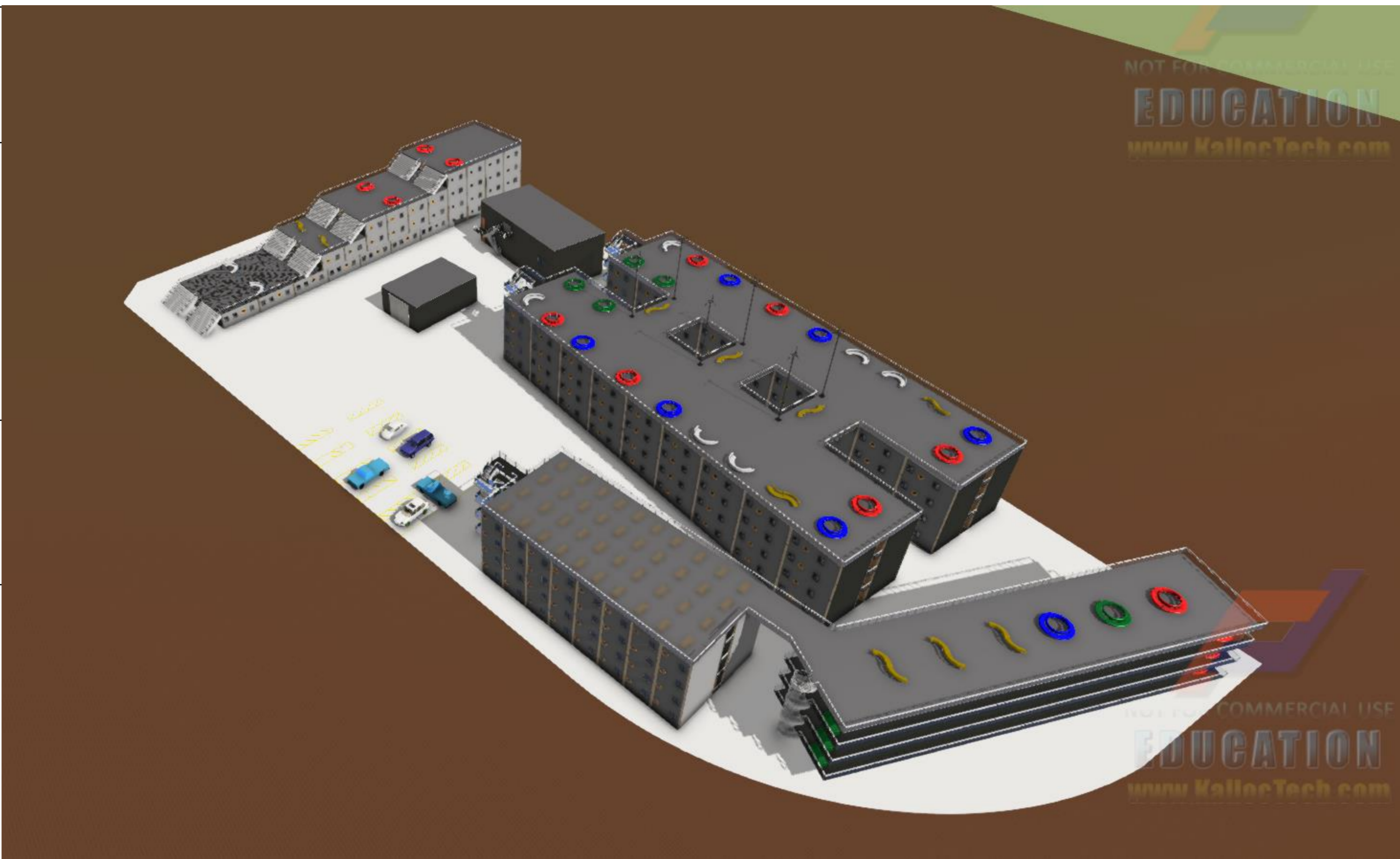
Quality of Design: How BIM improve the quality of design?

Sustainability: How are the considerations of sustainability aspect and passive building design being achieved?

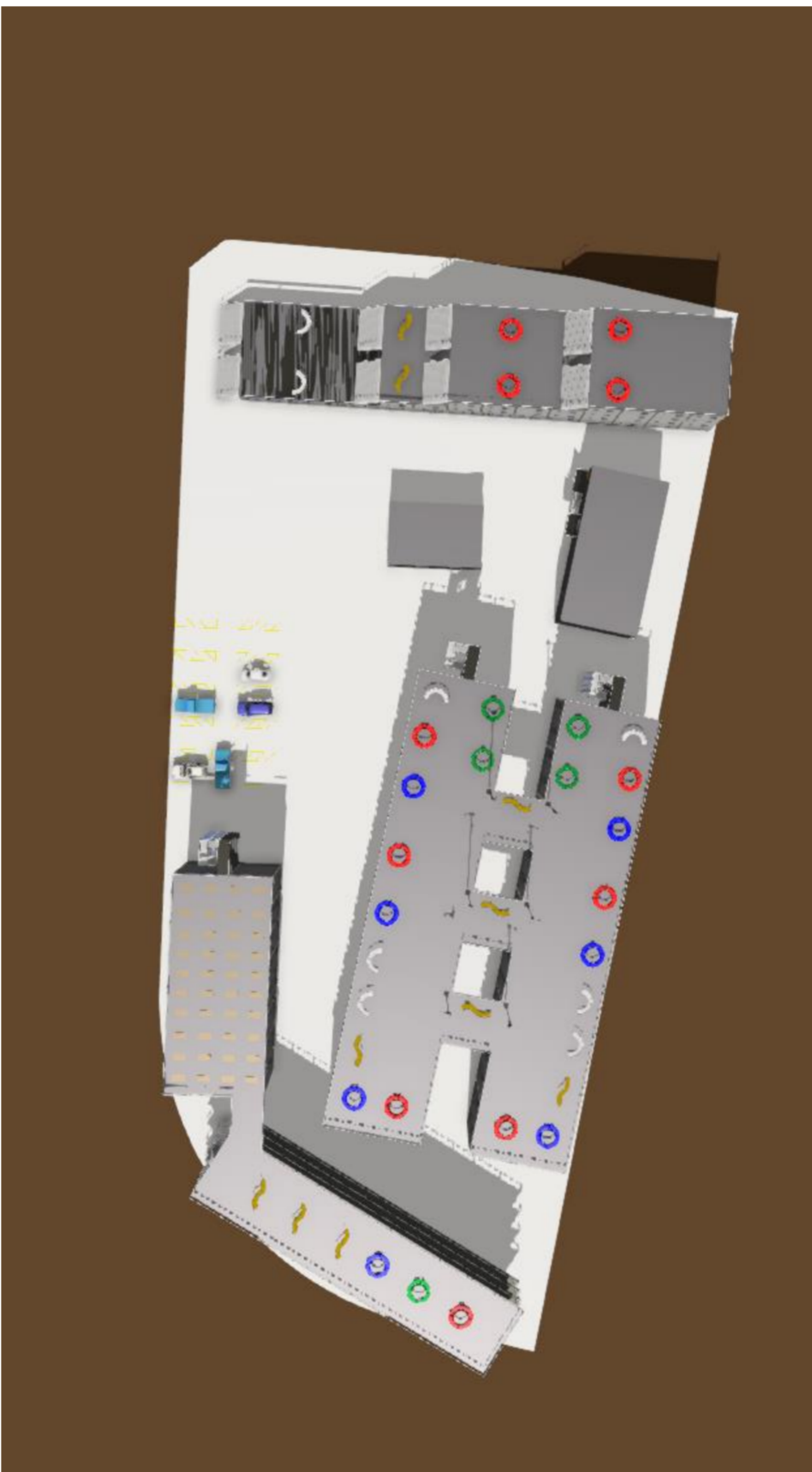
MIc/ DfMA: How is Design for Modular Integrated Construction or Manufacturing and Assembly being involved in the design considerations?

Constructability: Any innovative approach introduced for construction?

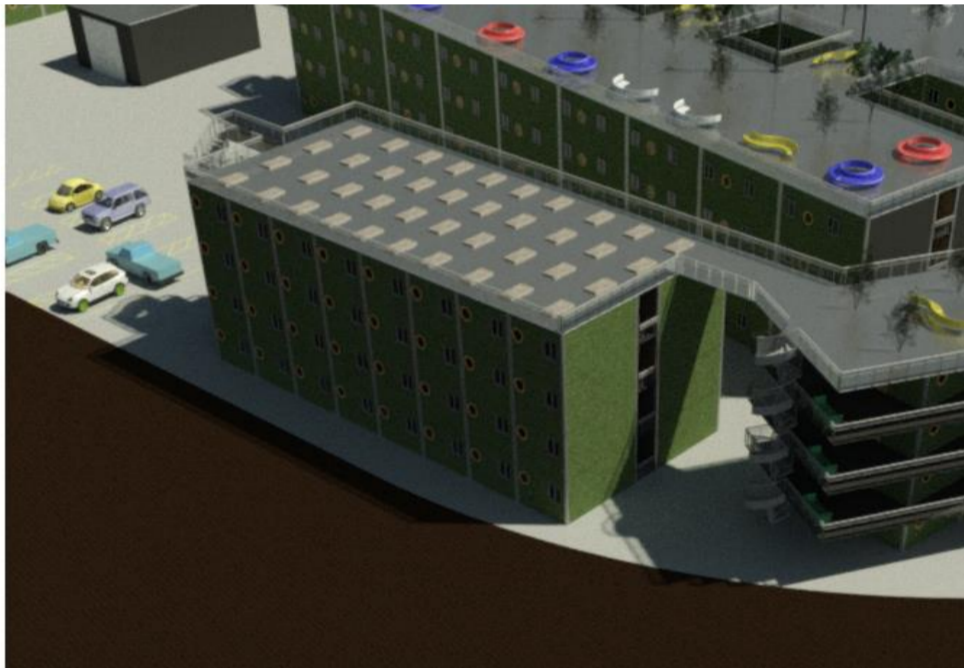
Summary: How BIM influences the design, engineering and design collaboration?



Overall Bird Eye view: Aims to provide a green environment and give excellent quality of living, there are open and recreational spaces for the community.



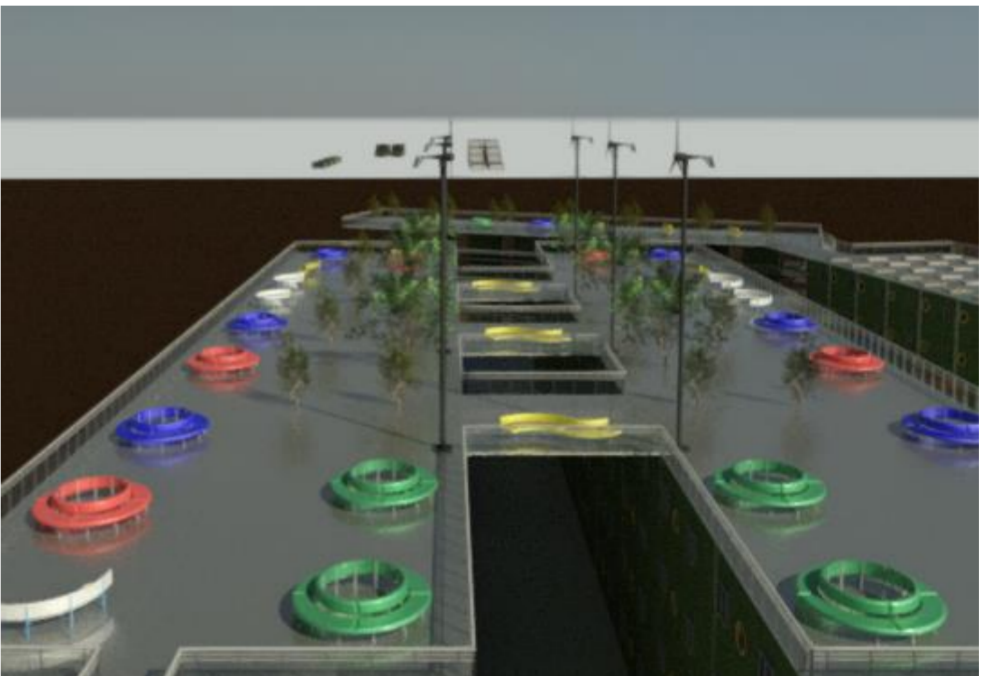
Building Form and Space: All models can be divided into three major buildings, their shapes are L, H and I respectively



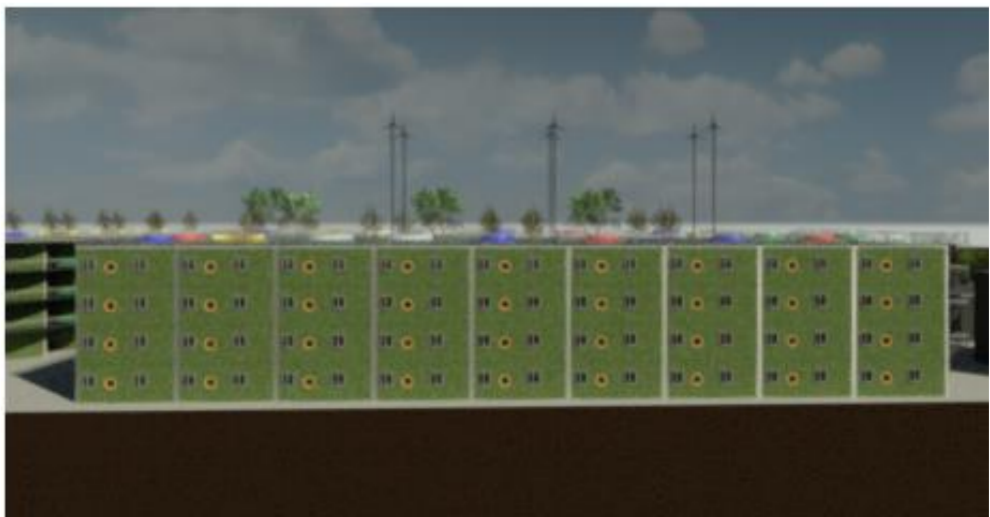
Solar plane



Roof greening



Roof greening



Vertical green wall

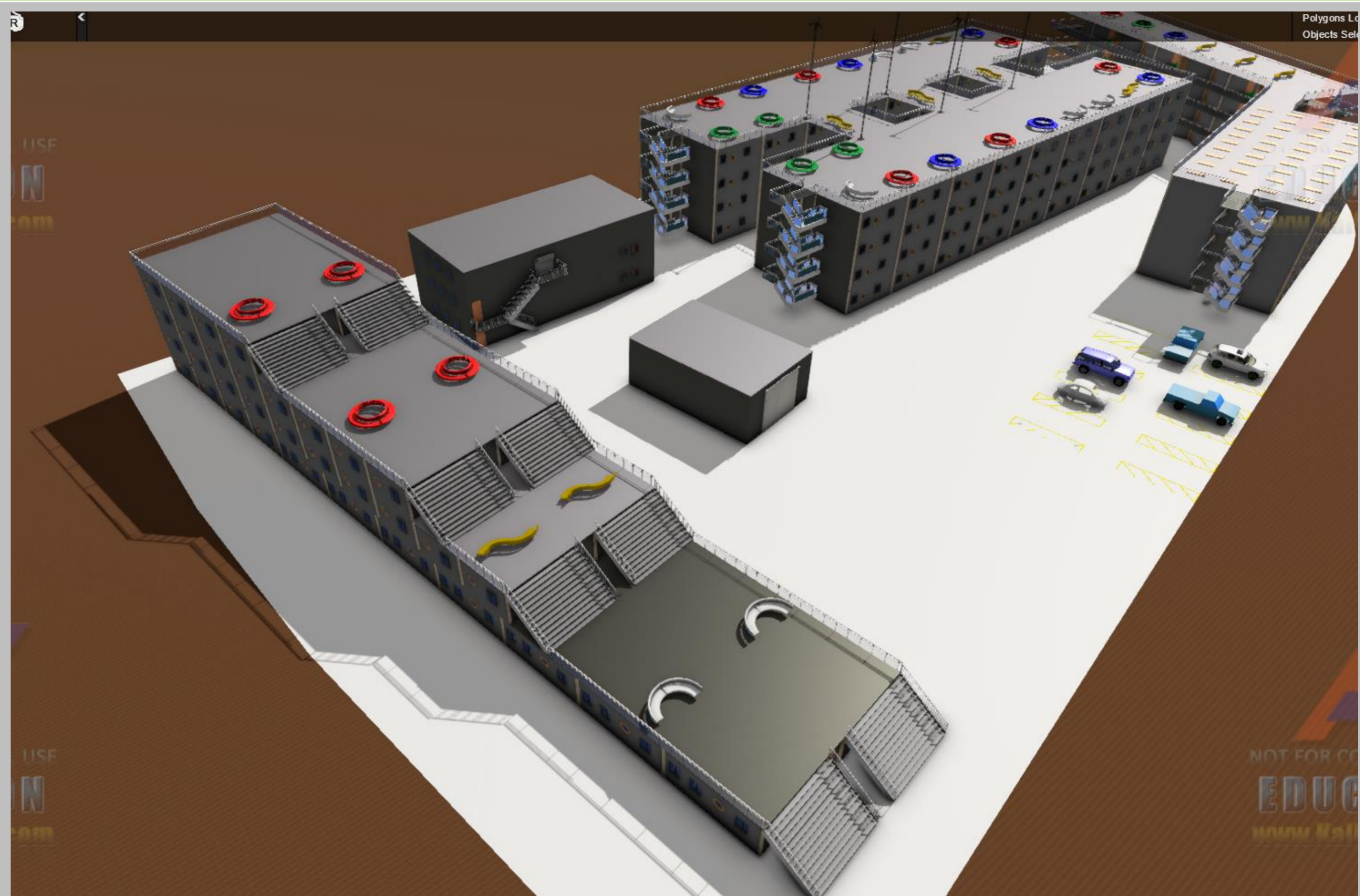
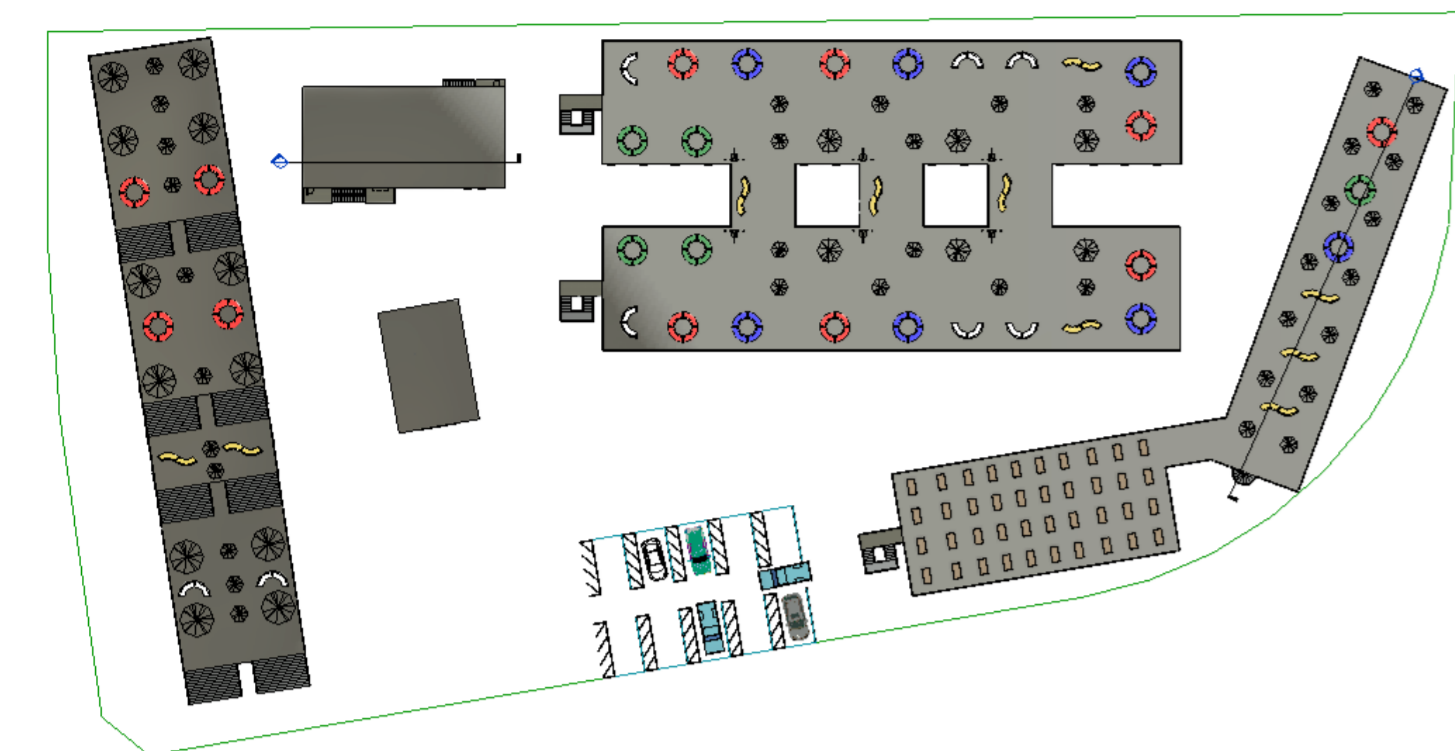
[illegible]

Quality: BIM helps us to better calculate the volume, quantity and other properties of each object

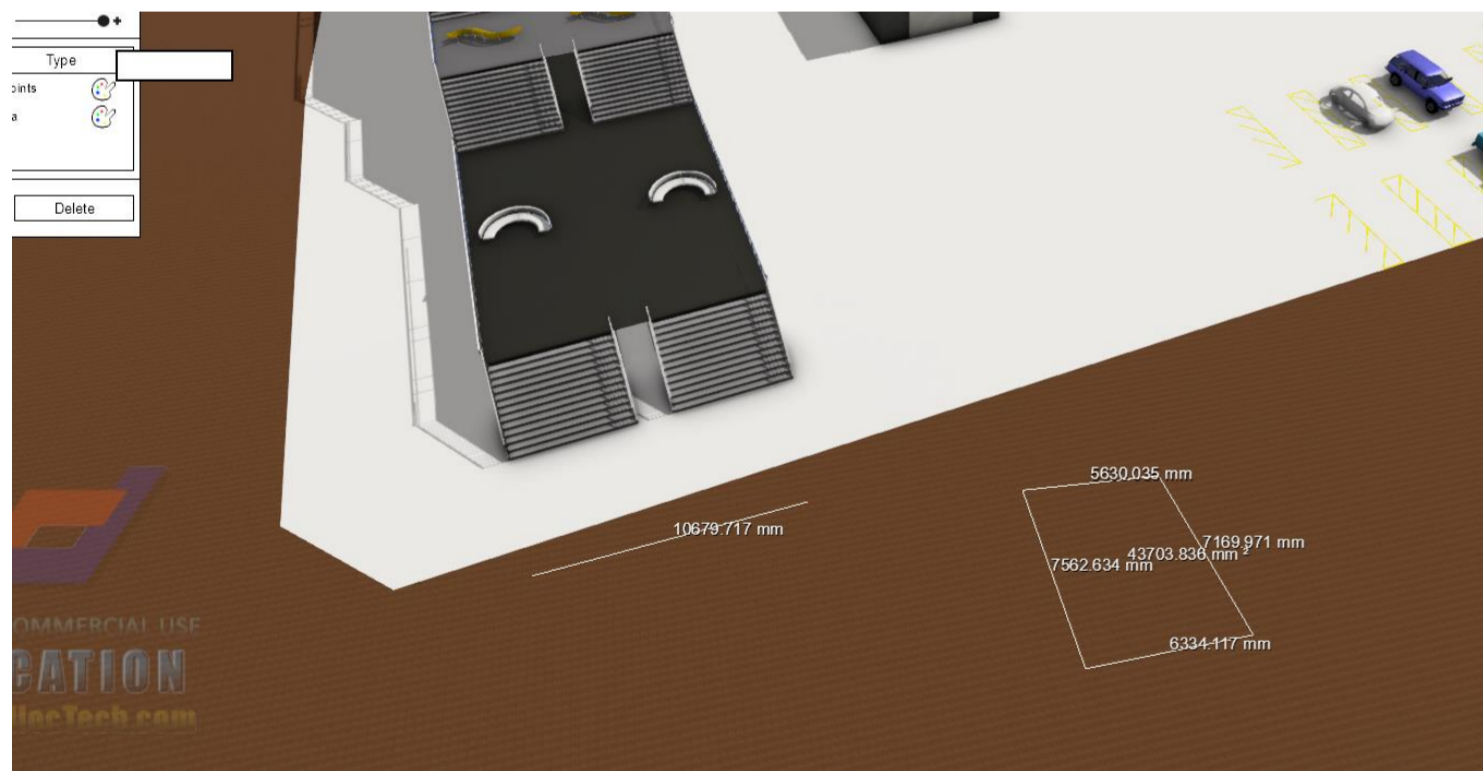
Sustainability: Solar power generation, green roofs and plant walls are used in the green environment

CIC BIM Competition 2022 – Submission Poster Template

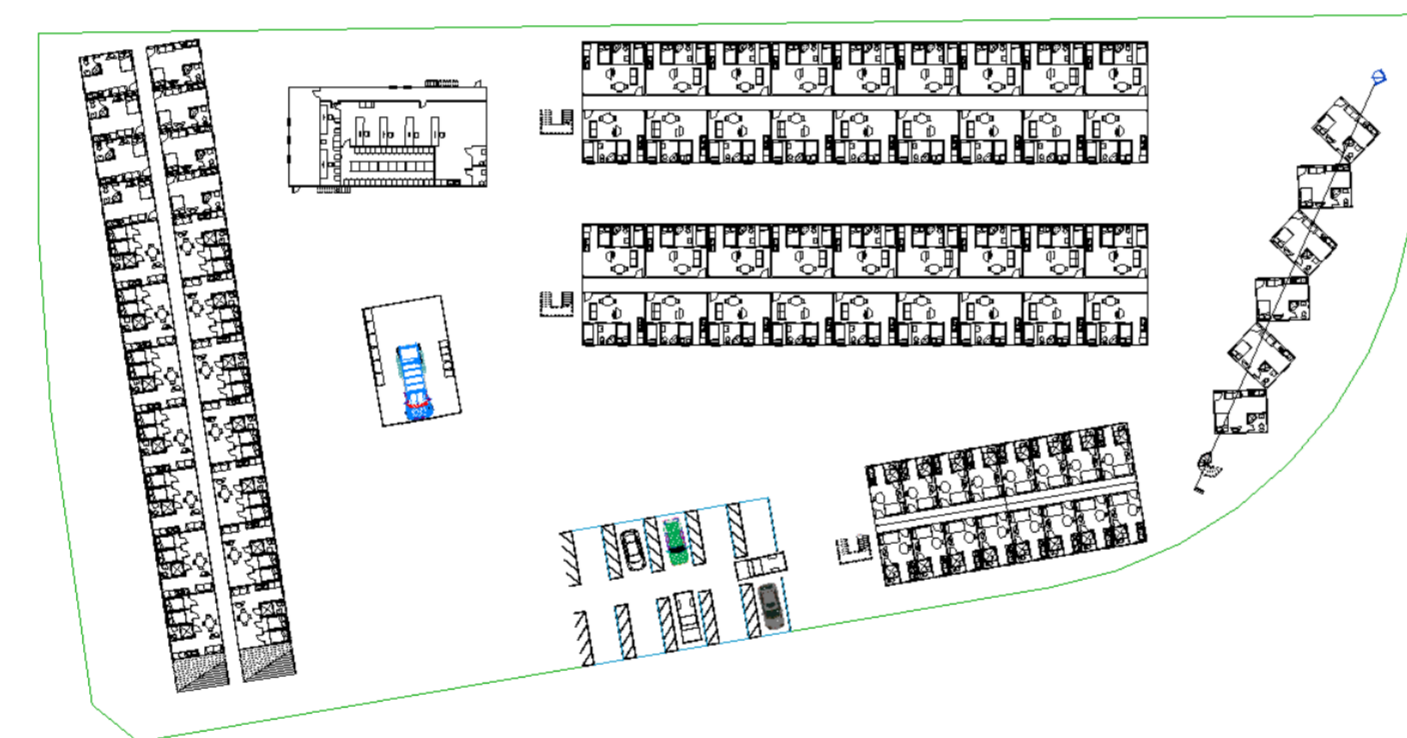
Site Layout Plan 1:1000



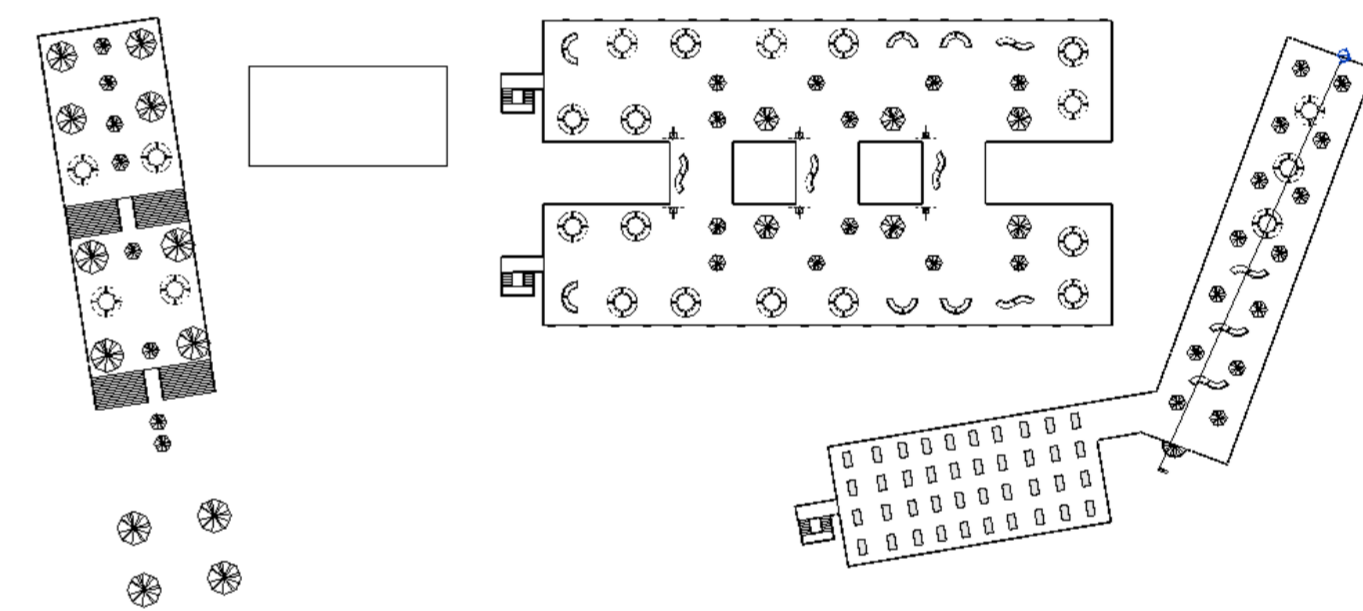
Perspective View: The architecture of our building is good at using the roof. For example, in the picture, the number of MICs on each floor of this building is different, so the roof area of each floor is different. People can take the stairs from the ground to the roof of the first floor, and then from From the roof of the first floor to the roof of the second floor, and so on



Computational Design: Computers can help us calculate the distance between two points or the area of multiple points



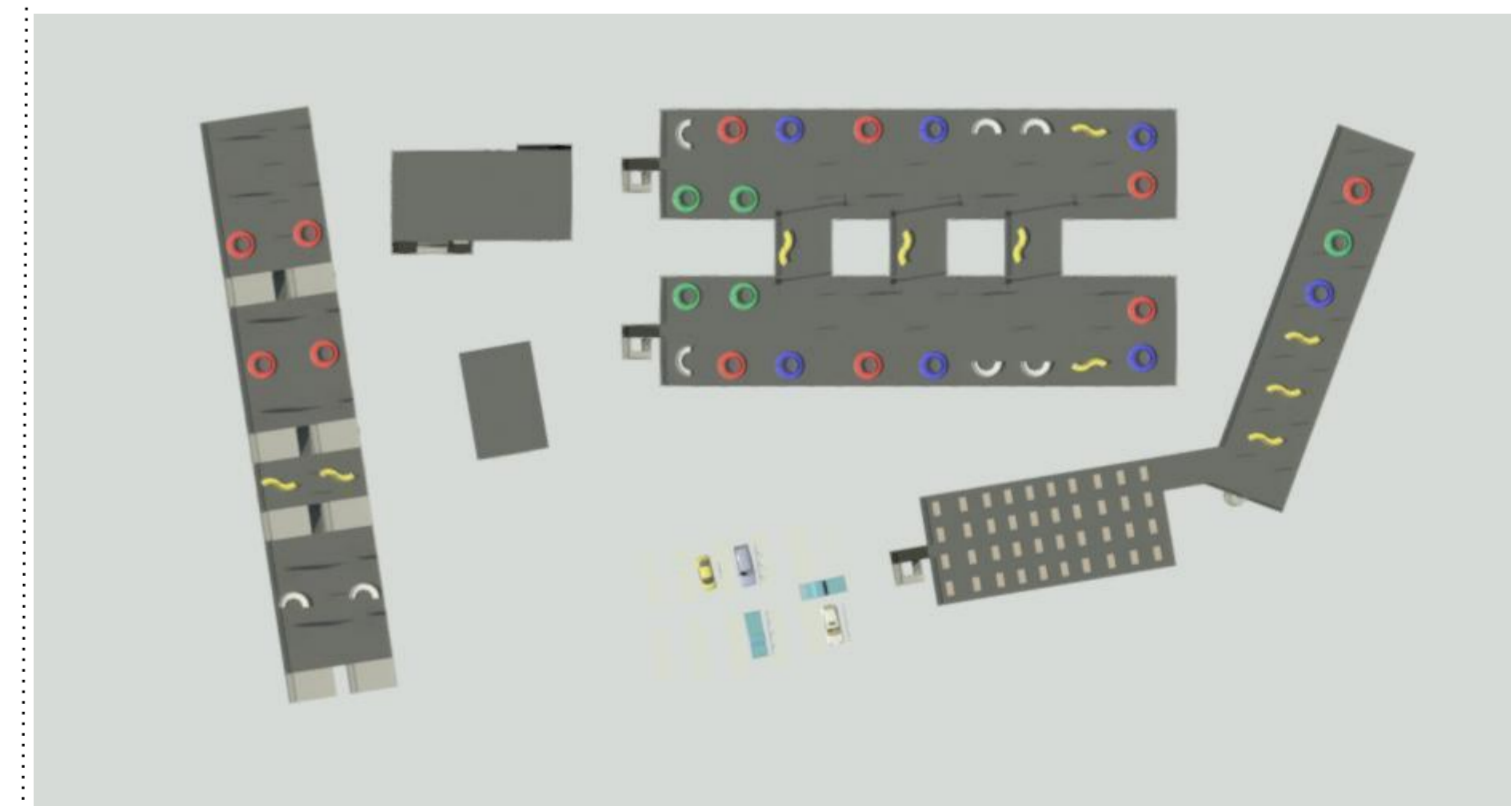
e.g. Ground Floor Plan 1:500



e.g. Typical Floor Plan 1:500

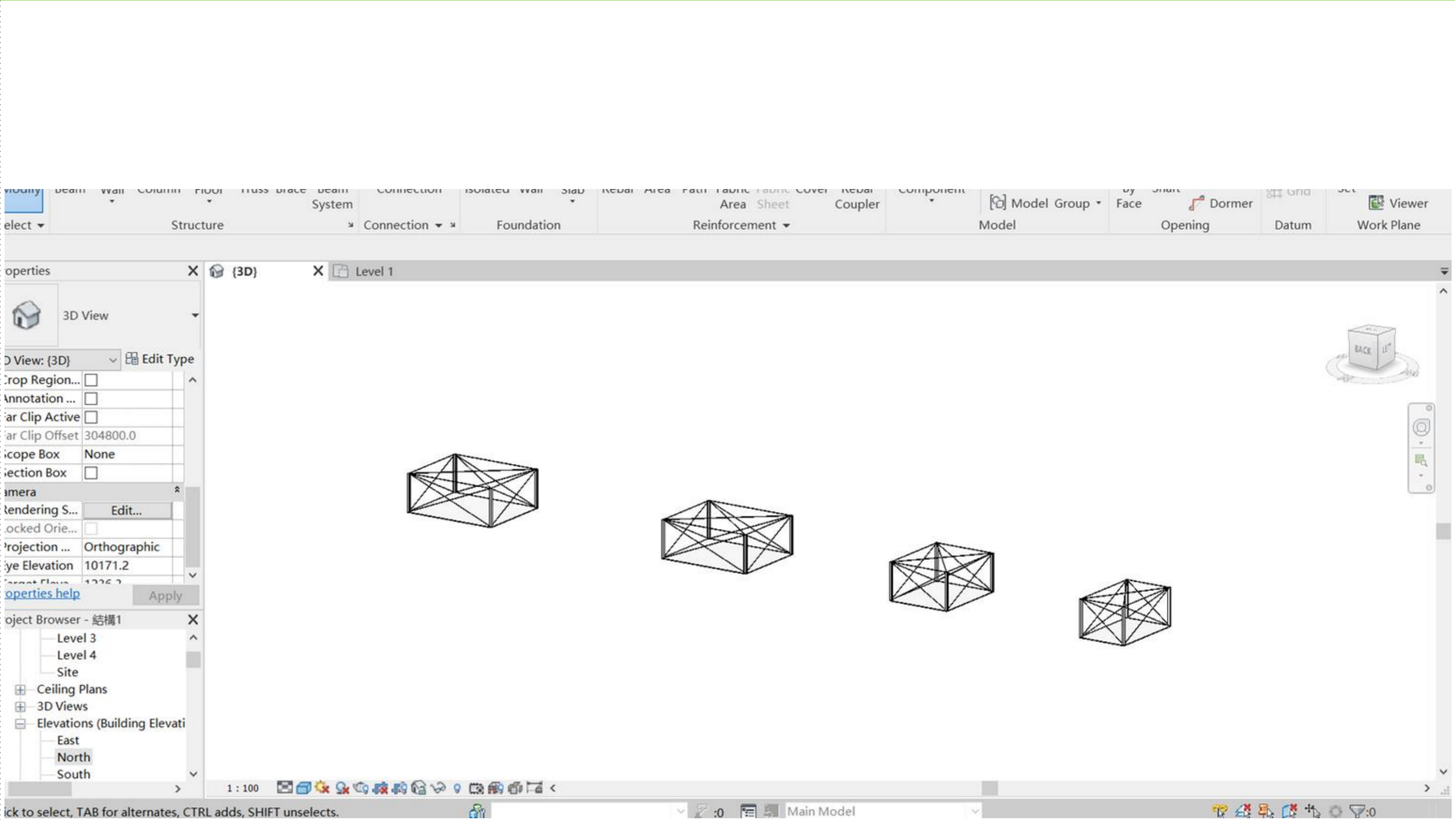
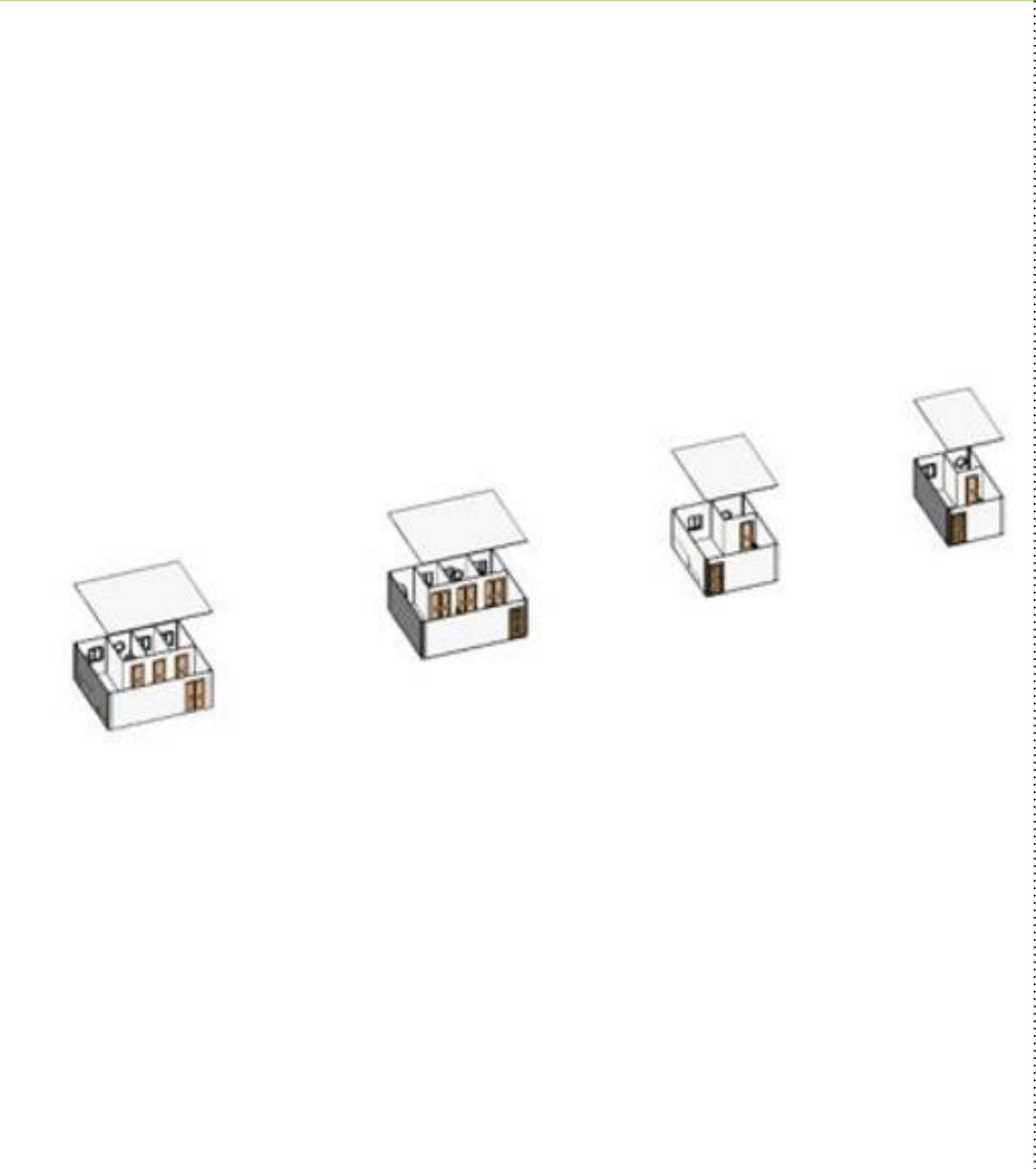


Internal Perspective 1:500



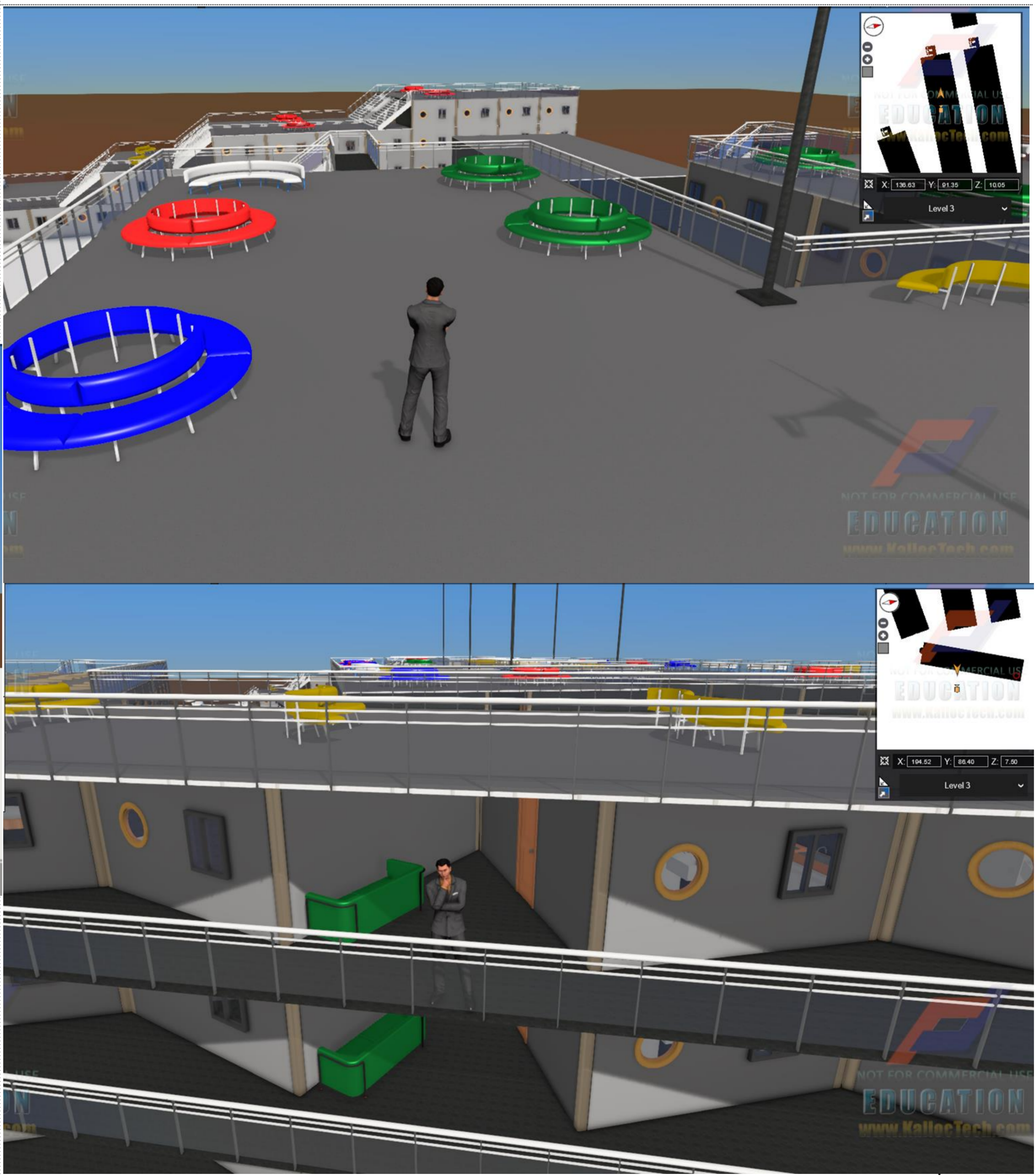
Overall Bird Eye view (Night View)

CIC BIM Competition 2022 – Submission Poster Template

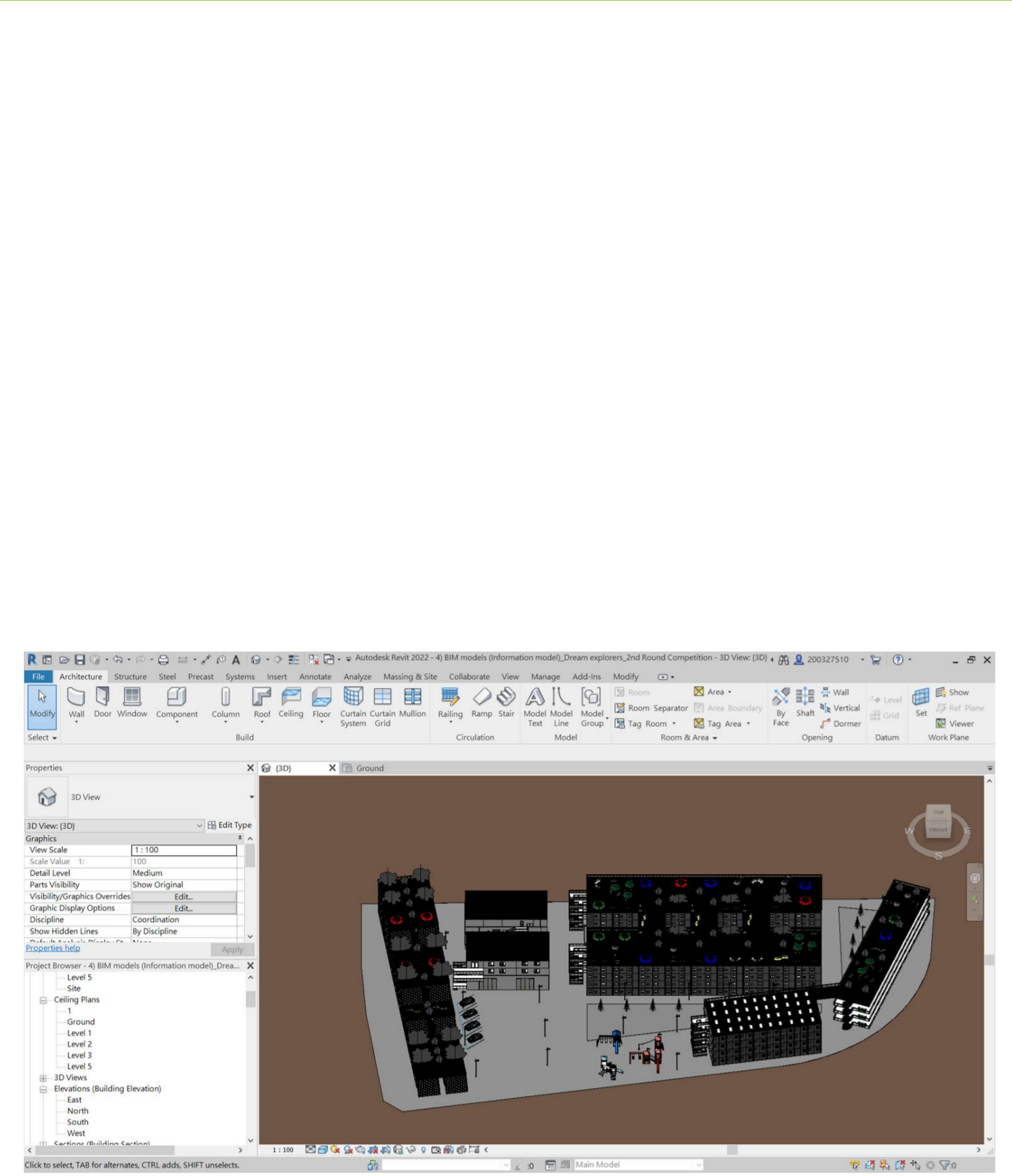


MiC/DfMA : The same MIC for each type increases production efficiency

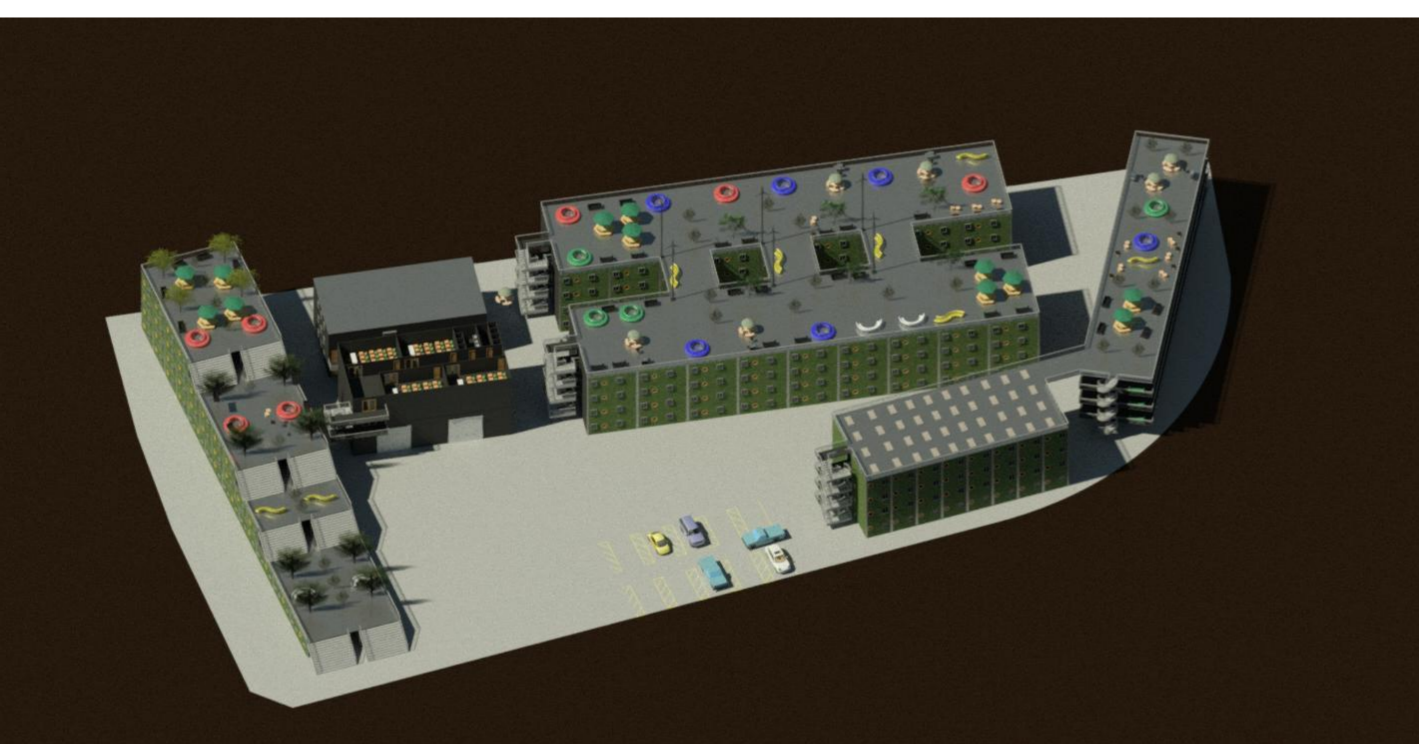
Perspective View: using the same structural material in all units



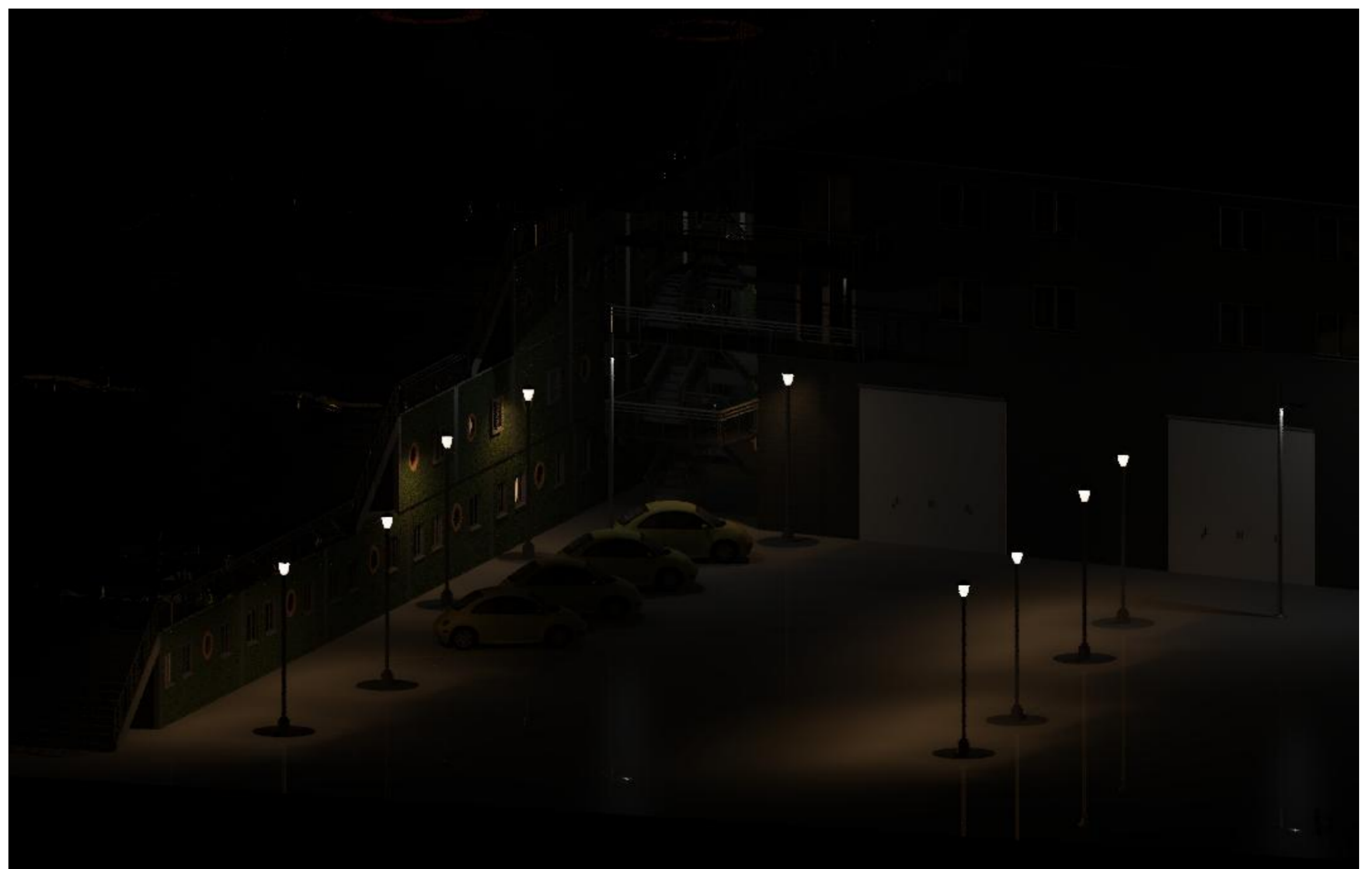
CIC BIM Competition 2022 – Submission Poster Template



Perspective View: Please put in textual description here to describe the design of engineering elements (Building Services). Sample text Sample text Sample text Sample text Sample text Sample text Sample text Sample text Sample text Sample text Sample text Sample text



erspective 1:500



Sectional Perspective 1:500